

PART OF E. 1/2 OF SEC. 28, T. 7N., R. 1W., S.L.B. & M.
NORTHRIDGE SUBDIVISION NO. 5

94

TAXING UNIT: 10

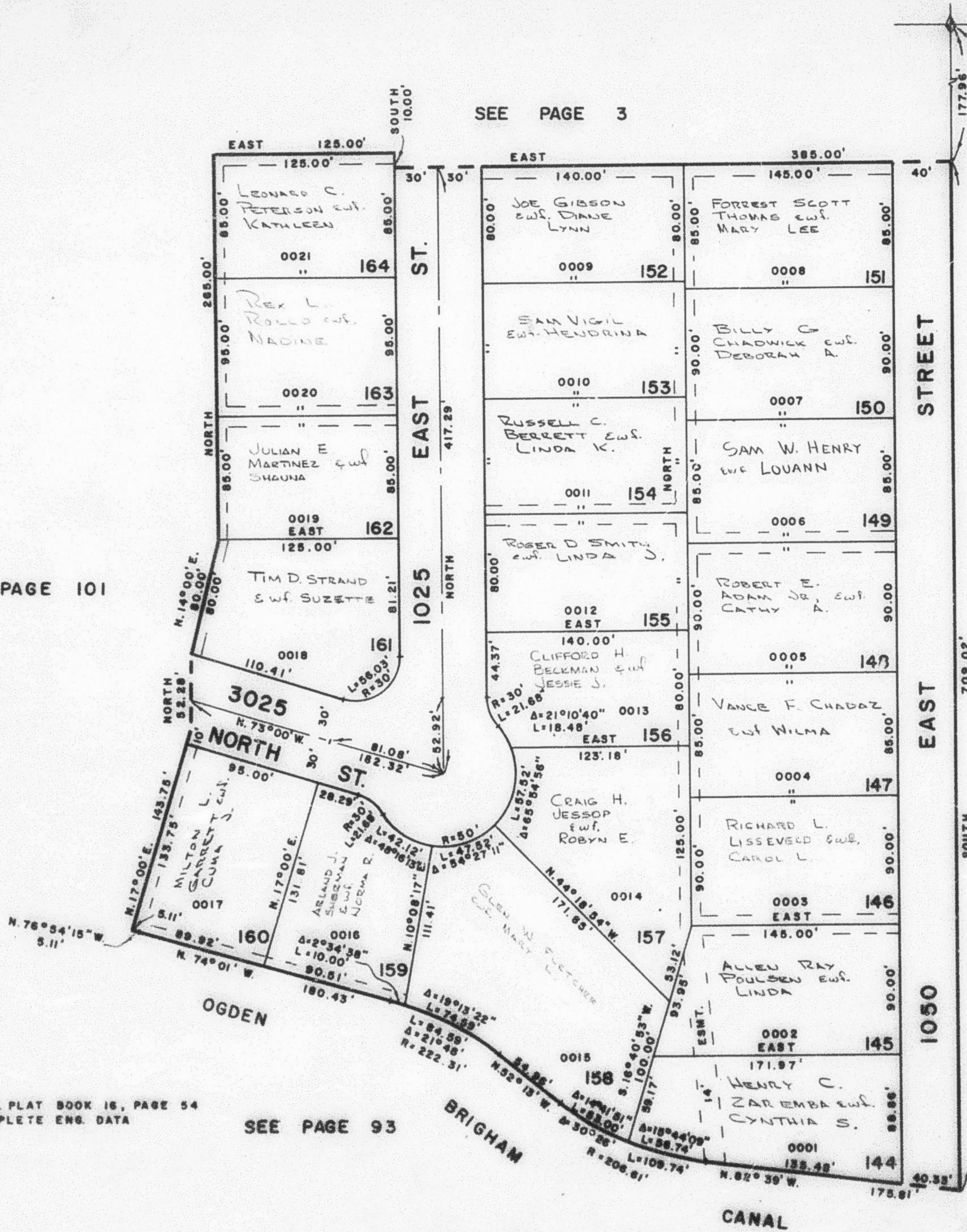
NORTH OGDEN CITY
 SCALE 1" = 60'

PREFIX: 17-094

SEE PAGE 101

SEE PAGE 3

S.E. COR. OF N.E. 1/4,
 OF N.E. 1/4, OF SEC. 28



SEE BOOK 16, PAGE 49

SEE ORIG. PLAT BOOK 16, PAGE 54
 FOR COMPLETE ENG. DATA

SEE PAGE 93